

# Calvary Christian School

A Ministry of Calvary Tabernacle since 1946

## UNIFORM GUIDELINES



## CCS UNIFORM GUIDELINES

In an effort to simplify our uniform program we are making the following changes:

Uniform slacks, jumpers, skirts, and some shirts may be purchased from any school uniform company. Please see uniform pictures and descriptions for allowed items.

Polo shirts and camp shirts must have our school logo on them. A camp shirt has a straight, horizontal bottom hem that is designed to be worn outside of slacks or skirts. CCS logo polo shirts will be available through Schoolbelles, Lands' End and the CCS office. We are working on arrangements for a one time opportunity to place logos on shirts and blouses that are brought in to the school office. We will share pricing and deadline details once they become available.

Some shirts and blouses do not take logos well. These items, without logos, will still be allowed at CCS (see headings under Girl's Items and Boy's Items for details). The shirt items that must have logos are listed below under the heading Boy's/Girl's Logo Shirt.

---

### General Uniform Guidelines

- Clothing Fit: Care must be taken to have clothing appropriately sized.
- Shirts/Blouses: Tails are to be tucked in unless they have a ribbing at the waist or are designed to be worn out (straight hem across with a notch on the side as optional). Camp shirts are also designed to be worn out.
- Skirts and Jumper Length: Girls' skirts and jumpers in Pre-school through Kindergarten are to be near the knee. First through Fourth grade skirt lengths are to reach no higher than the top of the kneecap. Fifth through Twelfth grade skirt lengths must cover the kneecap.
- Sweatshirts and Sweaters: Students may wear sweatshirts and sweaters for warmth in the class. Shirts must be worn underneath these with a collar showing. Coats are not to be worn for that purpose.
- Belts: If slacks or skirts have belt loops, a black, brown or blue belt must be worn. Suspenders are not to be worn.
- Shoes: Choose any primarily solid black, navy, or brown tie boat loafer, buckle type shoes or low cut white athletic shoes from the store of your choice. Low athletic shoes can also be worn that are a solid color of white, black, navy, or brown.

**SPECIAL NOTE: EACH STUDENT WILL NEED A PAIR OF TENNIS SHOES TO LEAVE AT SCHOOL TO WEAR WHEN GOING TO THE GYM. YOU MAY NOT WEAR STREET SHOES ON THE GYM FLOOR. PLEASE NOTE GUIDELINES ABOVE FOR TYPE OF ACCEPTABLE SHOES.**

- Socks: Hose or socks are required. Low cut athletic socks are allowed.
- Hats: No hats of any type are to be worn at school.
- Jewelry: No jewelry of any kind is allowed to be worn at school
- Layered clothing guidelines:
  - Short sleeved shirts may NOT be worn over long sleeved shirts
  - 1. If an undershirt, etc. is desired it must be white with no printed item showing through.
  - 2. Sweaters and sweatshirts must be worn over shirts with the collar showing.

In an effort to have standard uniform colors, all uniform items must be purchased from a uniform company.

---

## Boy's/Girl's Logo Shirts

The following shirts/sweatshirts may only be worn if they are embroidered with our school logo. Schoolbelles, Lands' End, and CCS will carry these shirts. Acceptable colors are: White, Navy, Light Blue, Light Yellow (not maize from Lands' End), and Hunter Green.

(CCS will provide a one time opportunity for you to bring in current shirts that you own already to have them embroidered. This will be in the middle to late July in order to have them back before school begins in August. An email notice will go out with more details.)



Logo Polo Shirt

Logo Camp Shirt (no tails; designed to be worn outside of slacks or skirt. Students in grades 7-12 may wear these shirts with tails out) – we are working on a supplier for these shirts.

Logo Sweatshirt

---

## Sweaters and Turtlenecks (Boy's and Girl's)

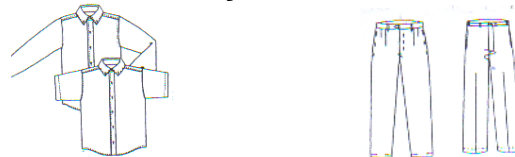


**Colors: White, Navy, Forest Green**

Jersey knit v-neck or crew neck cardigan  
Fine gauge knit cardigan sweater (for girls)  
V-neck sweater vest  
V-neck pullover sweater  
Long Sleeve Turtleneck  
Mock Turtleneck

---

## Boys' Items



### Shirts (no logo required)

**Colors: White, Light Blue, Light Yellow**

Oxford shirt (long sleeve or short sleeve)  
Classic dress shirt (long sleeve or short sleeve)

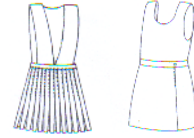
### Boys' Slacks

**Colors: Navy, Khaki**

Pleated or plain front pant (chinos/twill)  
Options: reinforced knee, elastic waist, and corduroy

---

## Girl's Items



### Blouses (no logo required)

**Colors: White, Light Blue, and Light Yellow**

Peter Pan blouse (long sleeve or short sleeve)  
Oxford blouse (long sleeve or short sleeve)

### Skirts and Jumpers

**Colors: Navy, Khaki, CCS Plaid (only available at Schoolbelles)**

V-Neck pleated jumper  
Two pleat front jumper  
Solid jumper  
Pleated skirt  
Kick pleat skirt  
A-Line Skirt  
Skort (Caution: must meet length requirements)  
Long Skirt (mid-calf length)  
CCS Plaid skirts (pleated and wraparound) and CCS Plaid jumpers are available only through Schoolbelles.  
Stretchy bike shorts (to be worn under skirt) Colors: Navy, Hunter Green, Black

---

## Gym Clothing Guidelines: Grades 7 thru 10

Boys: Solid navy nylon athletic pants.  
Two CCS athletic P.E. T-shirts. (Available at CCS)

Girls: Split Skirt/culottes from Schoolbelles.  
Two CCS athletic P.E. T-shirts. (Available at CCS)

---

## Current Vendors

We encourage you to still use these vendors.

### Lands' End

- For a catalog call 1-800-469-2222 Preferred School No.: 9000-7750-4
- [www.landsend.com/school](http://www.landsend.com/school)

### Dennis Uniforms

[www.allseasonsuniforms.com/edw3a1.htm](http://www.allseasonsuniforms.com/edw3a1.htm) (for the long skirt)  
[www.allseasonsuniforms.com/edw3a3.htm](http://www.allseasonsuniforms.com/edw3a3.htm) (for the medium skirt)

### Choice

1-877-324-6423  
[Dennisuniform.com](http://Dennisuniform.com) School Code: 1065

### Schoolbelles

- Pick up a Buying Guide from the office at CCS
- Call for a catalog 1-888-637-3037 or 317-255-5275
- [www.schoolbelles.com](http://www.schoolbelles.com) School Code: 1798
- School code: "Basics"